



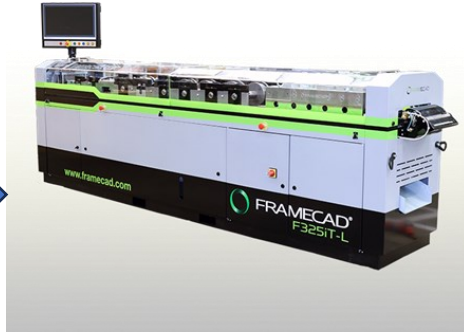
SEAS Homes

‘NxtGen Construction Technology for Fast, Permanent,
Premium finished & Strong Structures’

WHAT IS SEAS HOMES TECHNOLOGY ?

- “Light Gauge Steel Framing” is construction technology where cold formed steel is used as construction members.
- Entire building is constructed with individual cold formed steel panels like walls, roofs, decks, beams etc.
- All panels are manufactured in factory with high precision as per structural drawings.
- Pre-fabricated steel brought to site and assembled as per assembly drawings to make individual panels – walls, roofs, joists etc.
- Assembled panels are erected sequentially to construct entire structure.
- Post that structural cladding work is done.





MANUFACTURING

ASSEMBLY



FINISHING



**WALL PANEL
FITTINGS**



**ERECTI
ON**

LGSF VS CONVENTIONAL PREFABRICATED STRUCTURE

SPECIFICATION	MS FABRICATED STRUCTURE	LGSF STRUCTURE	BENEFIT OF LGSF
GRADE	E250	E550	Reduced weight of overall structure
COATING	POST FABRICATION COATING REQUIRED	150GSM COATING	Better performance in extreme weather condition even if exposed
MANUFACTURING	MANUAL	AUTOMATIC	Higher accuracy in construction & reduced site execution time
CONNECTION	WELD OR BOLT	SCREWS OR RIVET	Very less site connection activities
ERECTION	CRANE OR HYDRA	HUMAN	Easy to erect the structure
LOAD DISTRIBUTION	FRAME STRUCTURE	LOAD BEARING SYSTEM	Uniform distribution of load & less offsets of internally, more carpet areas

Structural Components of System



Walls

- Load Bearing Wall
- Shear wall
- Non load bearing walls

Flooring

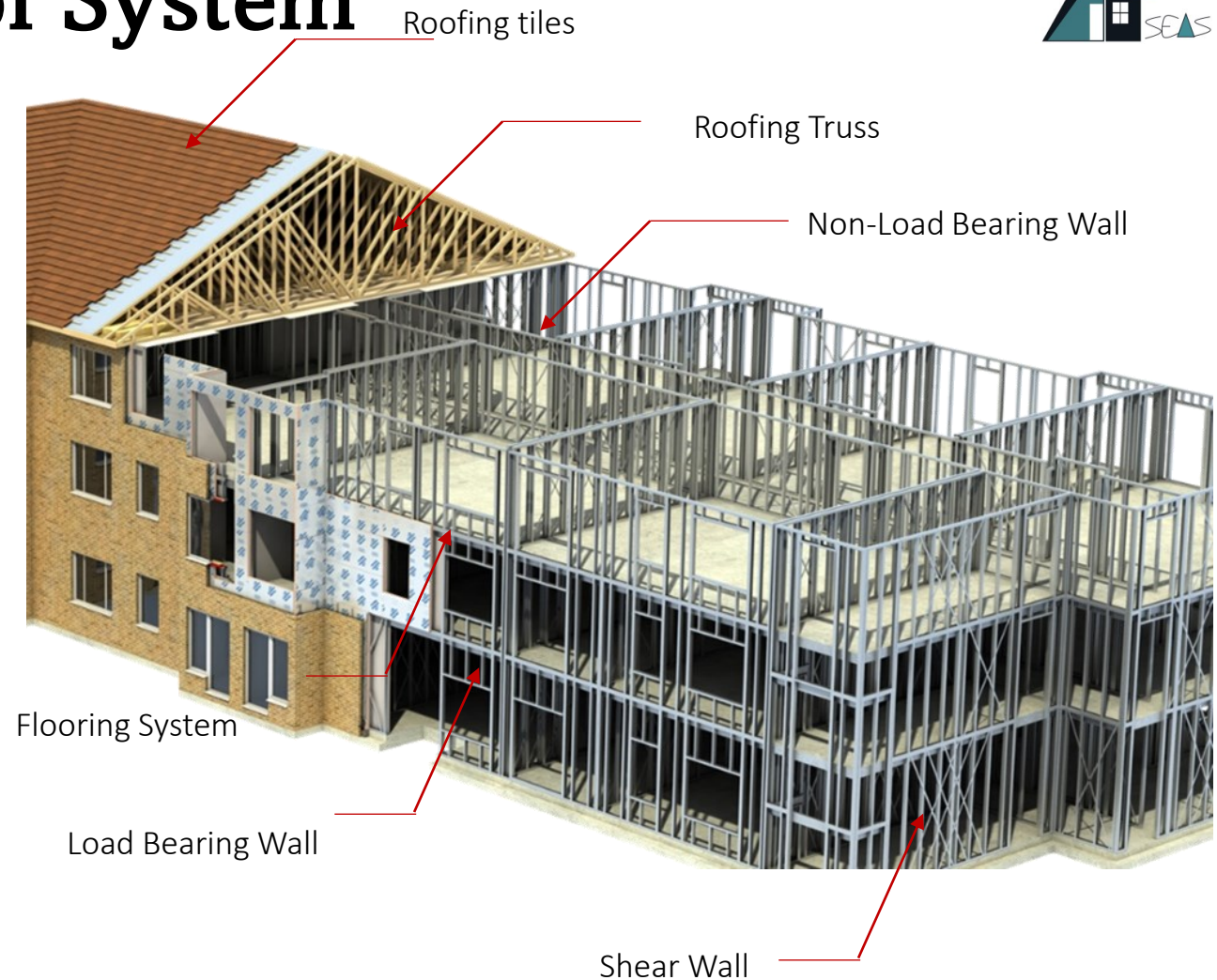
- Joists floor
- Truss joists floor

Roofing

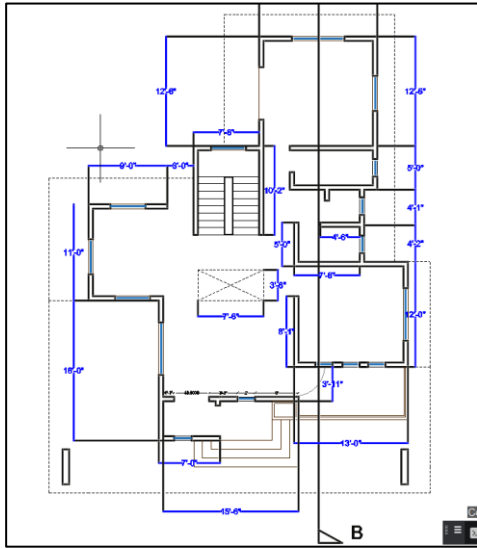
- Truss roof
- Joists roof

Connections

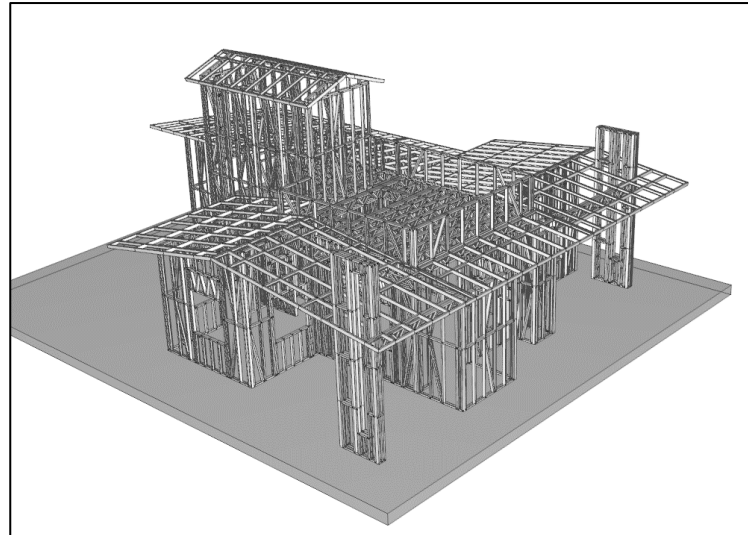
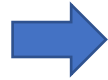
- Wall to floor/roof connection
- Wall to foundation connections



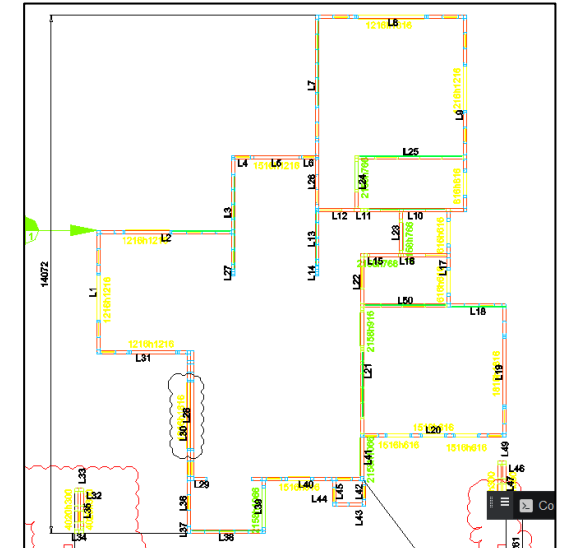
Design, Manufacturing and Erection Stages



Working Drawing



Structural Design & Detailing



Assembly Drawings



Machine File & Production



Steel Production as per design



Assembly & Erection

WHY TO CHOOSE SEAS HOMES



- 50-60% faster completion



- 7-8% more carpet area



- 8-10 times lighter than RCC



- Weather Resistant



- Seismic & Cyclone Resistant Design



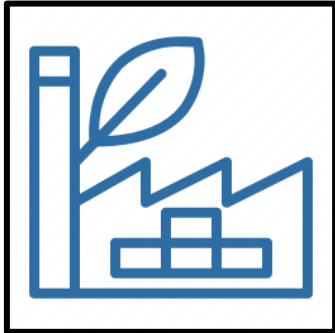
- 100% accurate construction



- Professional & Skilled siteteam



- No Bricks, Cement, water, sand Required



- All factor made Material with high precision and control



- Premium Quality finishing

DISADVANTAGES

- EARLY INVESTMENT IS HIGHER
- PRE-CONSTRUCTION PLANNING IS VERY IMPORTANT
- POST CONSTRUCTION CHANGES ARE VERY DIFFICULT
- VIBRATING EQUIPMENT SHOULD BE DAMPED OR PROVISIONS NEEDS TO BE DONE
- PRECISE DRAWINGS ARE EXPECTED
- UNPLANNED LOADS SHOULD BE PLACED CAREFULLY.



Components of SEAS Homes: Galvalume Steel



HOUSE OF STEEL : Walls, Roofs, slab joists

Light Gauge Steel is cold formed Galvalume steel AZ150 G550. It is:

- ✓ **Strong:** 550 MPA yield strength
- ✓ **Durable:** Exceptional Corrosion & Weather resistance
- ✓ **Light Weight:** 5 to 8 times lighter house than conventional
- ✓ **Recyclable:** Without losing its virtues it can be recycled infinite times
- ✓ **Reusable:** Could be dismantled and erect again at desired location
- ✓ **Quality:** Advanced Australian Manufacturing unit
- ✓ **Functionality:** Sections are manufactured with the provisions for Electricity Conduits and & holes for the connections
- ✓ **This high performance steel is used at every 1, 1.5 or 2 feet as per the design requirements**

Components of SEAS Homes: Fibre Cement Boards



Where do we use FCB?

- External Walls, Internal Walls
- Heavy Duty Boards for Slab
- As Cladding on the walls
- Roofing, Roof underlays



Why we use FCB?

- Impact Resistant
- Moisture Resistant
- Termite Proof
- Fire Resistant
- Sustainable

Components of SEAS Homes: Rockwool Insulation



Why Insulation?

- ✓ Non combustible and Fire Resistance
- ✓ Noteworthy Thermal resistance
- ✓ High Sound Absorbent
- ✓ Biologically Inert
- ✓ Non Hazardous
- ✓ Environment Friendly
- ✓ No Aging Effect

Components of SEAS Homes: Vapour Barrier



Why Vapour Barrier?

- ✓ Excellent Resistance to water Permeance
- ✓ Chemical Resistant
- ✓ Rot Proof
- ✓ Bacteria Resistant
- ✓ Long Life



Multi-Layered Waterproofing by SEAS Homes



WALLS

1. Corners & Joints by PU Elastomeric Sealant
2. Fiber Tape
3. NCL Spray jointing Plaster
4. Damp Proof by Asian Paints

BATHROOM WALLS

1. Corners & Joints by PU Elastomeric Sealant
2. Synthetic Resin Liquid as Primer
3. Deformable, Cement based with Elongation properties Adhesive Suitable for any tiles including Natural Stones
4. Vapour Barrier on other side of walls

BATHROOM FLOOR

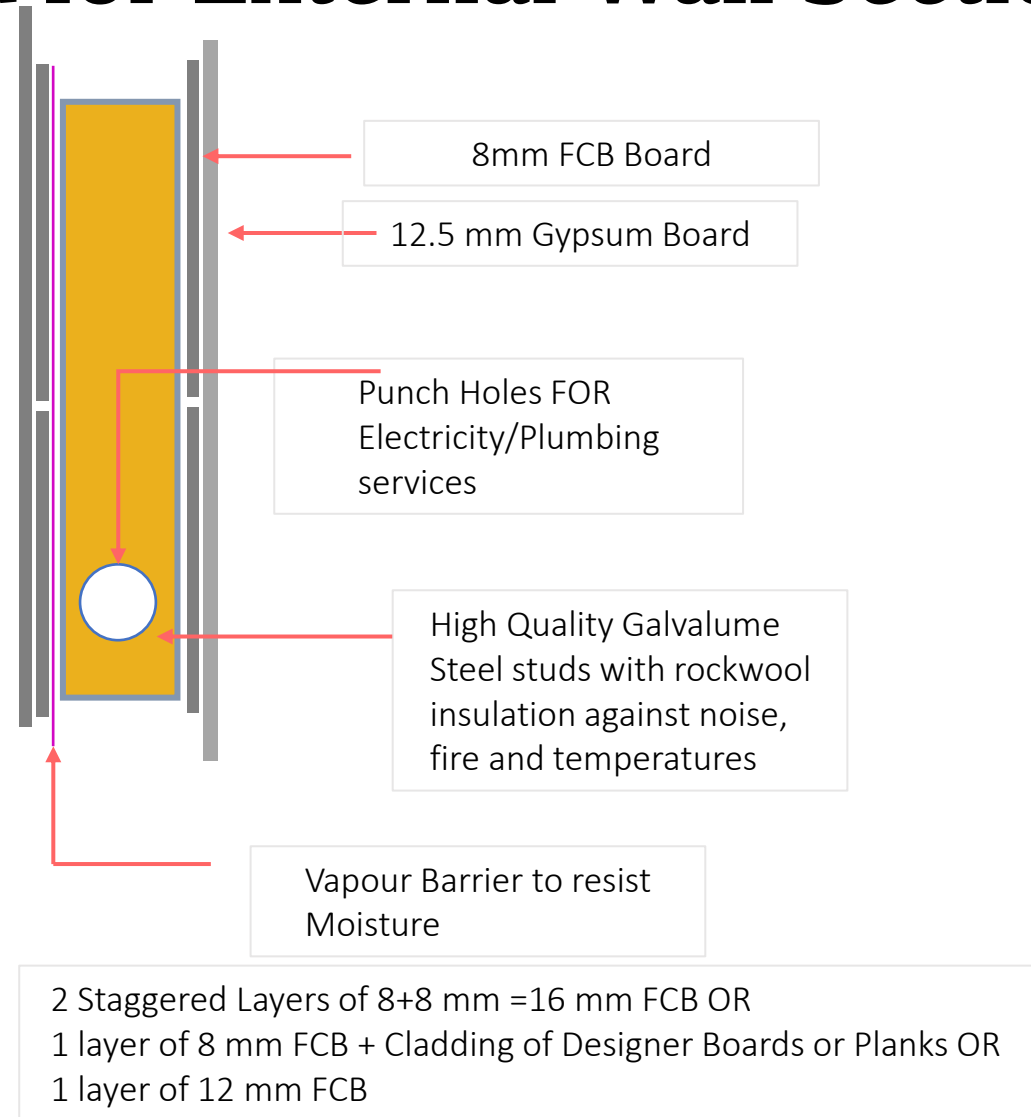
1. Corners & Joints sealed by PU Elastomeric Sealant
2. Coving by Bituminous Sealing Tape
3. Bonding Primer
4. PU Waterproofing compound in grid application
5. Deformable, Cement based with Elongation properties Adhesive Suitable for any tiles including Natural Stones

TERRACES

1. Corners & Joints by PU Elastomeric Sealant
2. Coving by Bituminous Sealing Tape
3. Primer
4. 2 coats of PU/Acrylic Compound
5. 2 coats of Damp proof
6. Concrete Screeding/Tiles

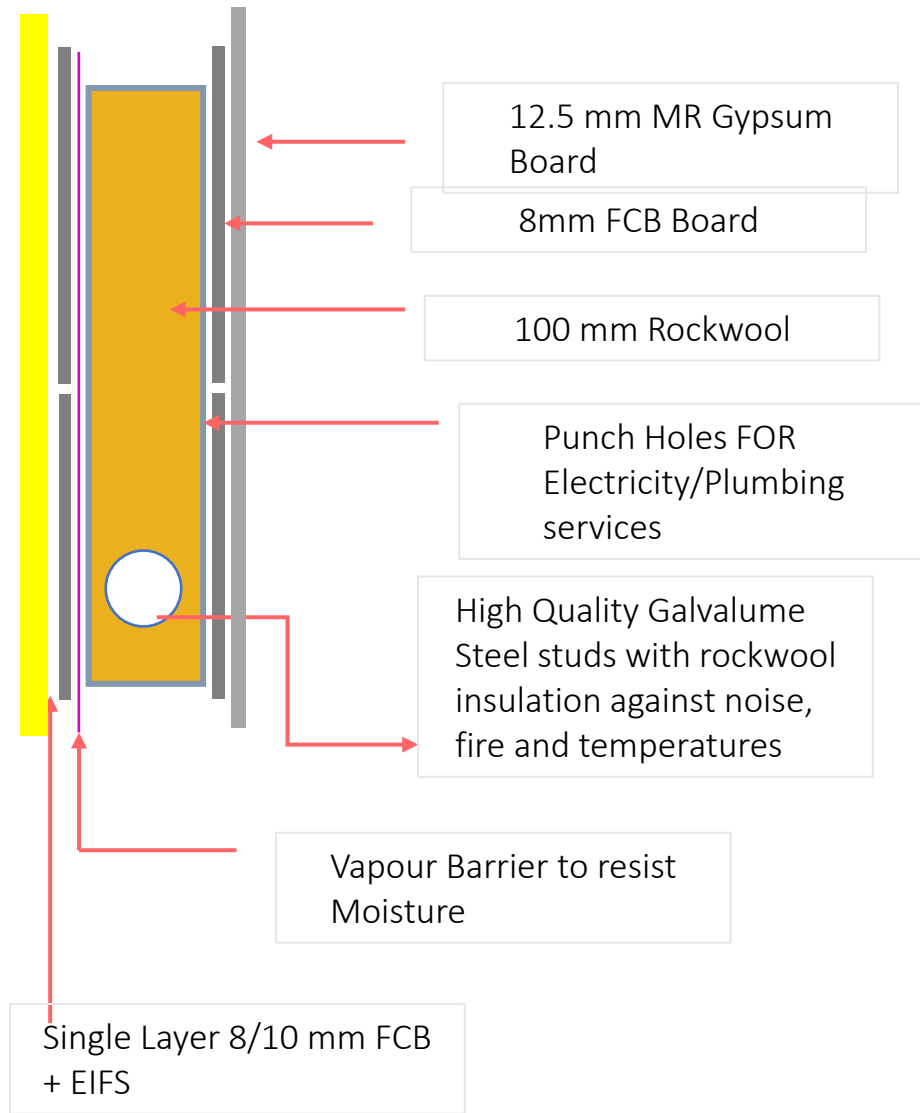


Options offered for External Wall Sections



Option 1: Standard Budget

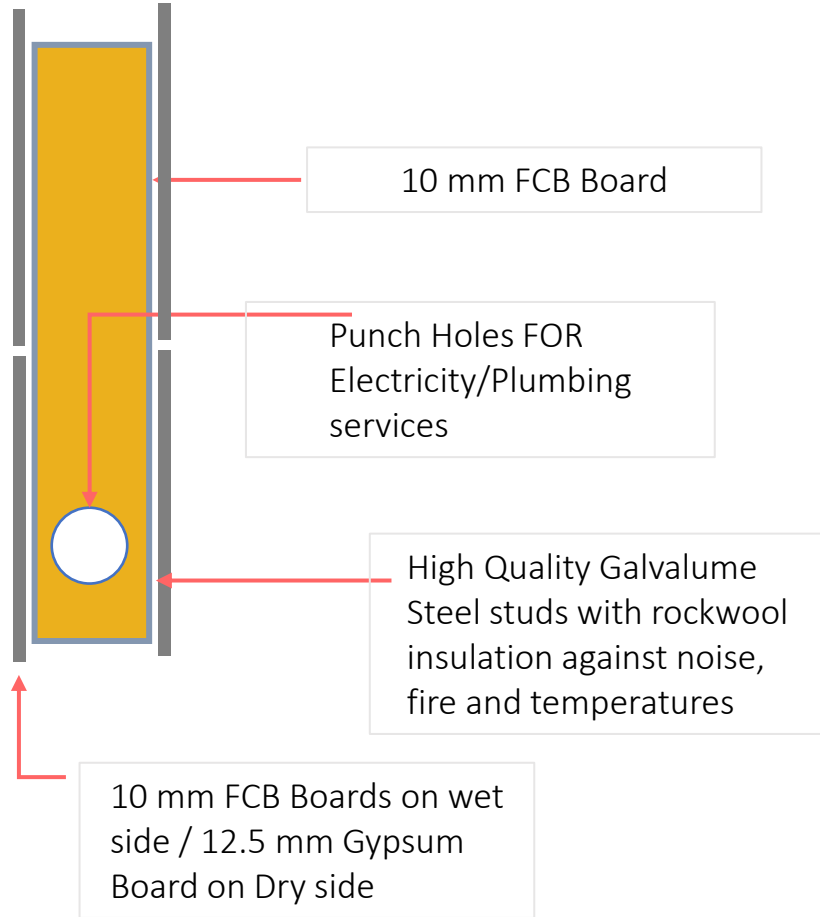
Options offered for External Wall Sections



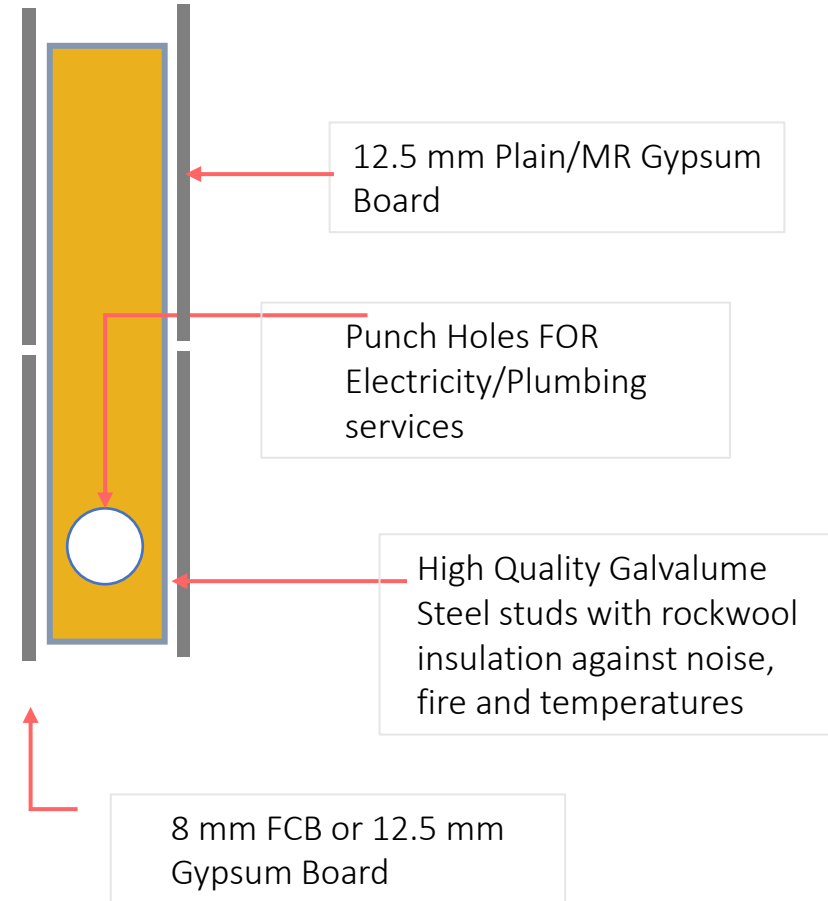
What is EIFS?

Option 2: Premium Budget

Options offered for Internal Wall Sections

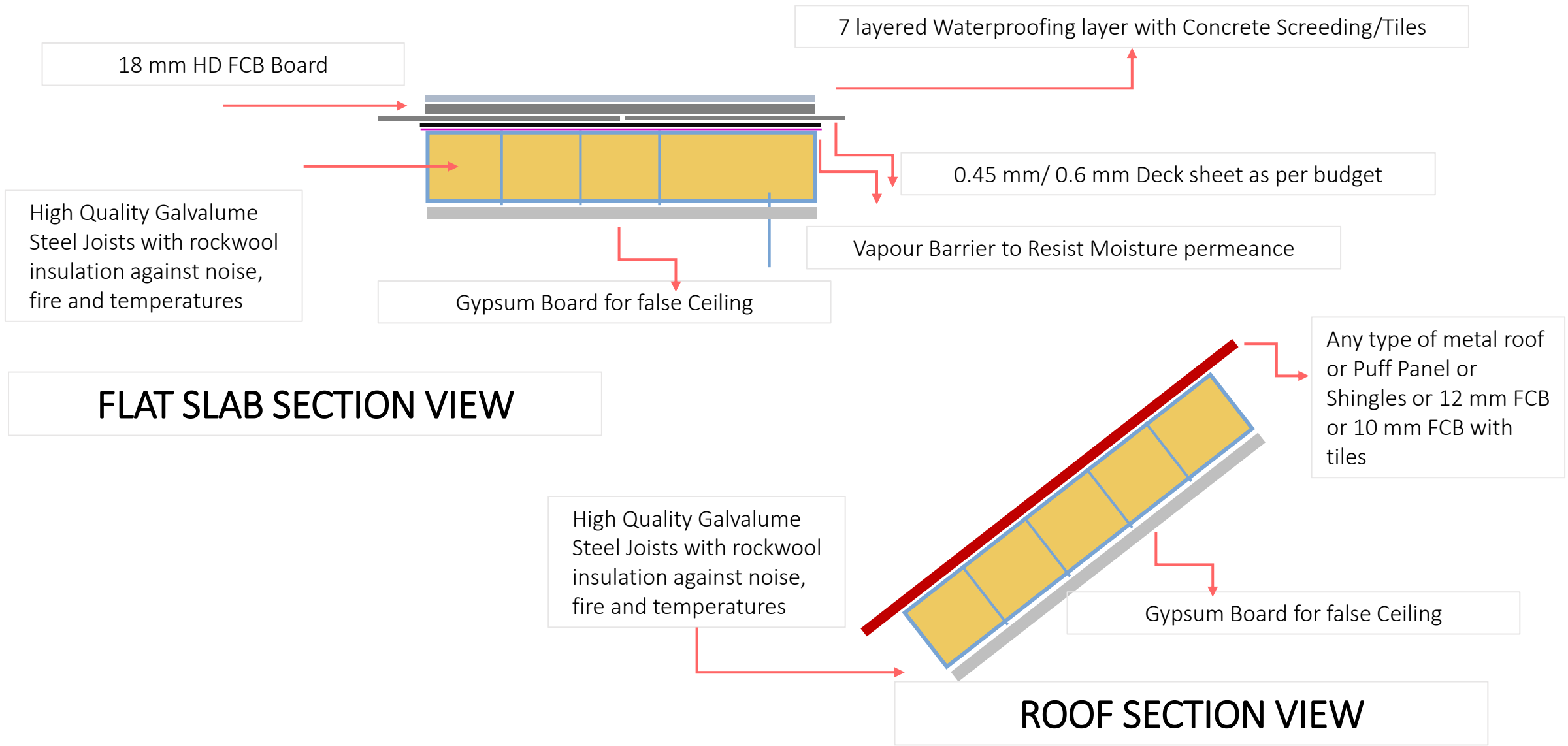


Wet Areas



Dry Areas

Slab and Roof Sections



SEAS HOMES TECHNOLOGY







BUNGALOW EXTENSIONS PROJECTS

Extension of House for Mr. Jadhav at Satara



Area – 2700 sqft

Time to completion of Cold Shell – 90 days

Challenges – Less place around building, Double Height walls

Reason to choose SEAS HOMES – Light Weight, Dry Construction,
Performing House, Faster, No use of concrete and water



Extension of the house for Mr. Shedge at Satara



Area – 1100 sqft (Turnkey Project)

Time to completion of Cold Shell – 60 days

Challenges – Lockdown, less place around building

Reason to choose SEAS HOMES – Light Weight, Faster, No use of concrete and water, Performing House,

Extension of House/Hospital for Dr. Sukale at Mahad, Raigad



Area – 1200 sqft

Time to completion of Cold Shell – 40 days

Challenges – Lockdown, Rainy Season, 4th floor extension

Reason to choose SEAS HOMES – Light Weight, Faster, No use of concrete and water

Extension of 30 year Old House for Mr. Rathod



Area – 1000 sqft

Time to completion of Cold Shell – 40 days

Challenges – Lockdown, Rainy Season

Reason to choose SEAS HOMES – Light Weight,
Faster, No use of concrete and water



Extension of House for Mr. Sawant at Satara



Area – 800 sqft (Turnkey Project)

Time to completion of Cold Shell – 45 days

Challenges – 3rd floor Extension, No place around the building

Reason to choose SEAS HOMES – Professional Team, Performing House, Faster Construction, No Concrete

**PRIVATE RESIDENTIAL &
COMMERCIAL PROJECTS**

A small Farmhouse at Diskal, Satara



Private Villa for Dr. Ghadge at Kaas Plateau



Area – 1800 sqft

Time to completion of Cold Shell – 60 days

Challenges – Lockdown and Remote & Hilly place

Reason to choose SEAS HOMES – Faster, Economical, No use of water , Hassle Free experience

Weekend Villa for Mr. Patil near Velhe, Pune



Area – 1700 sqft (Turnkey Project)

Time to completion – 90 days

Challenges – Remote place

Reason to choose SEAS HOMES – Faster, Hassle free experience, Performing House, Professional team,

Roof for Mr. Patil Residence at Kolhapur



Area – 4300 sqft (turnkey Project)

Time to completion of Cold Shell – 90 days

Challenges – Complicated Design of roof

Reason to choose SEAS HOMES – Anti corrosion steel,
Light Weight, Faster



Weekend Private Villa for Mr. Nikam in Girivan near Mulsi



Area – 3000 sqft (turnkey Project)
Time to completion of Cold Shell – 60 days
(finishing work ongoing)
Challenges – 40ft long roof, complicated design
Reason to choose SEAS HOMES – Performing House, Faster, professional team, hassle-free experience



Weekend Small Villa for Mr. Kumar (Ex-chief Secretary of MS) at Pune



Area – 1200 sqft (two Structure)
Time to completion of Cold Shell – 60 days (Finishing work Ongoing)
Challenges – Disrupting flow Electricity
Reason to choose SEAS HOMES –
Economical, Faster



Retirement Home for Mr. Ashish Kumar at Pali Hill City, near Khopoli



Area – 1700 sqft (Turnkey Project)

Time to completion of Cold Shell – 45 days

Challenges – Remote place

Reason to choose SEAS HOMES – Professional Team, Performing House, Faster Construction

Dairy Processing Unit at Pirangut for Yellow Slice



Area – 3300 sqft (Turnkey Project)
Time to completion of Cold Shell – 70 days
Challenges – Retaining wall done in LGS system
Reason to choose SEAS HOMES – Fast Construction



Villa for Mr. Fuwad Khan at Velhe, Pune



Area – 1500 sqft

Time to completion of Erection– 10 days

Challenges – Remote place, Unique Design

Reason to choose SEAS HOMES – Professional Team,
Performing House, Faster Construction



Villa for Mr. Gaikwad at Sangola



Area – 1500 sqft (Turnkey Project)

Time to completion of Cold Shell – 42 days

Challenges – Use of Concrete panel as external cladding

Reason to choose SEAS HOMES – Fast & durable construction



HYDERABAD PROJECT



ALIBAUG PROJECT



SIKKIM PROJECT

LAWASA PROJECT



PAWANA PROJECT





CIIT Project at Gadchiroli





CIIT Project at Gadchiroli

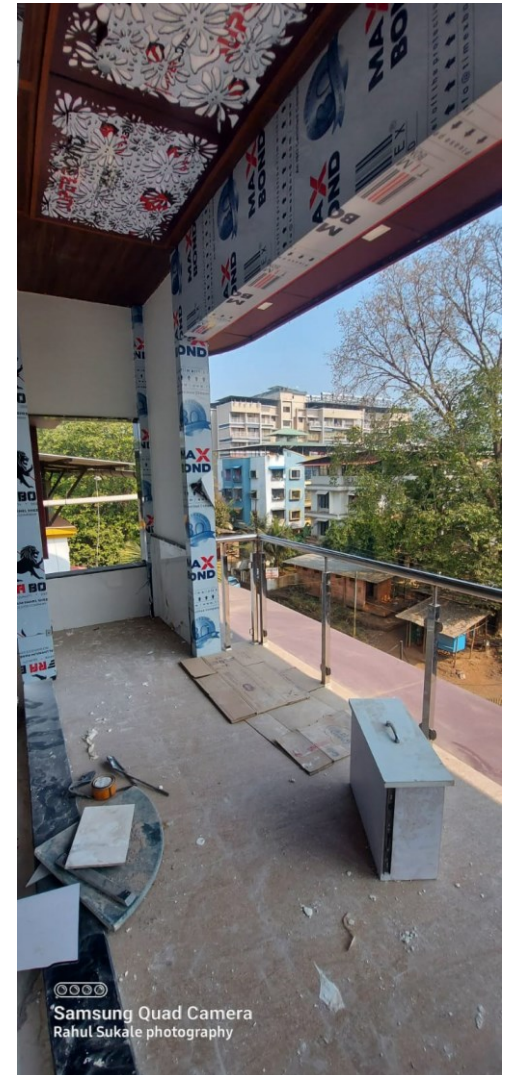
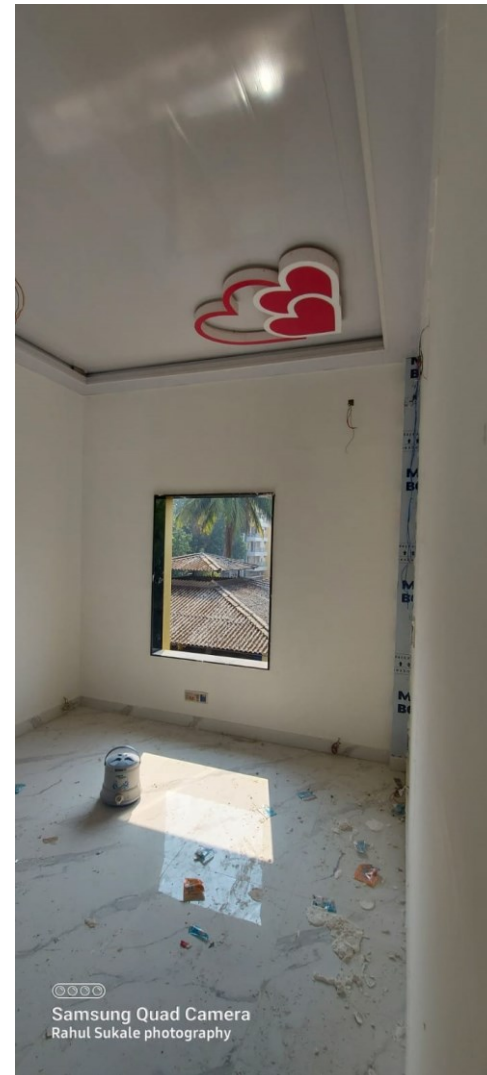
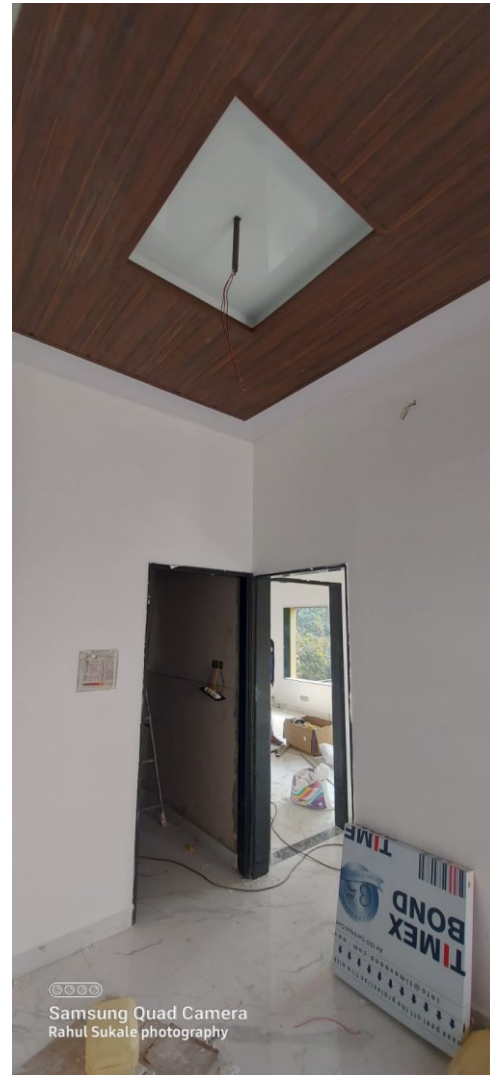
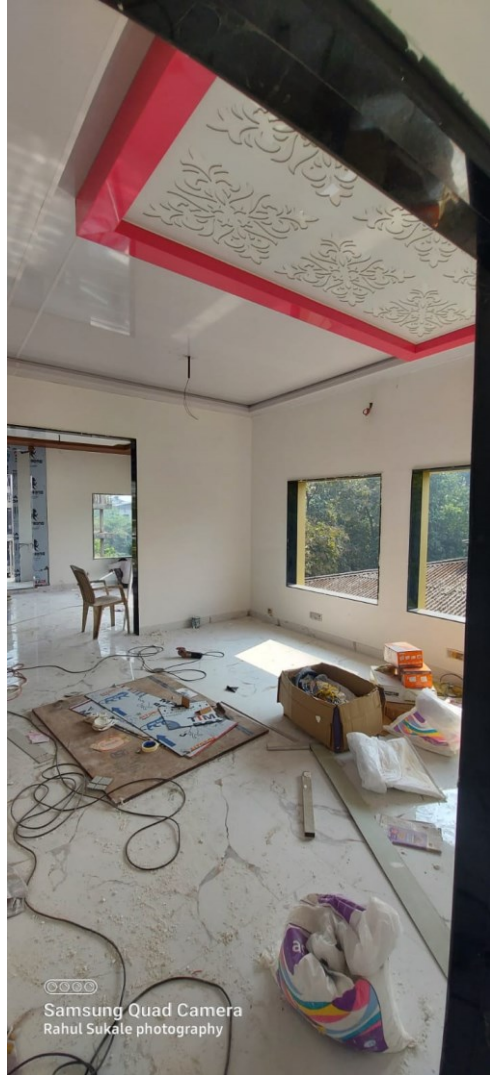




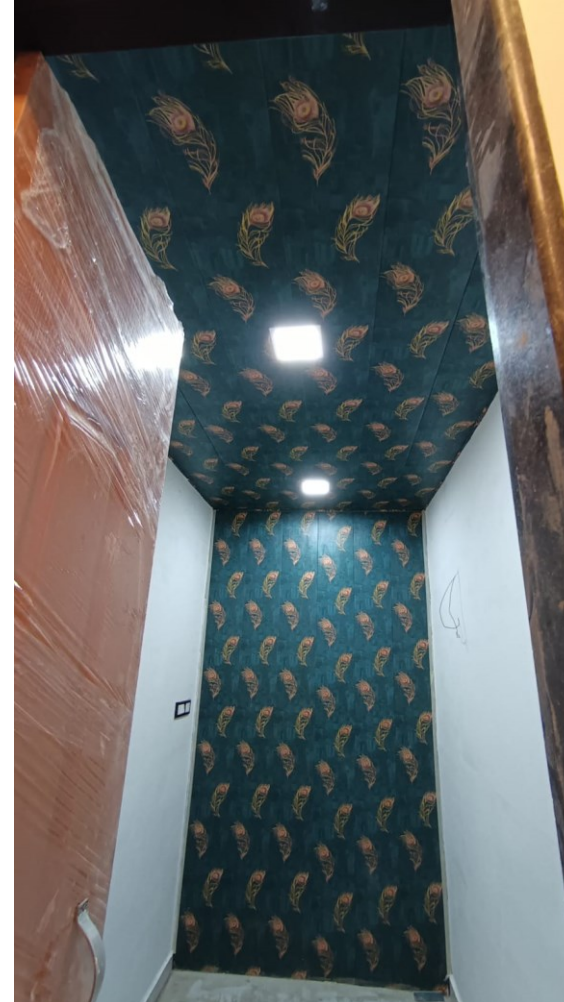
MODULAR HOUSE – LIFT & SHIFT



BEAUTIFUL FINISHED ROOF TOP Extension INSIDE & OUT



BEAUTIFUL FINISHED ROOF TOP Extension INSIDE & OUT



Our Ongoing Projects



1. **18000 Sqft CIIT (Institutional Building) Unit at Gadchiroli**
2. **13000 sqft apartment building at Sikkim**
3. **9000 sqft dormitory for School at Arunachal Pradesh**
4. **2500 sqft mockup hotel for Saint Gobain at Delhi**
5. **2500 sqft private villa for Mrs. Thatte at Beverly hills near Shahapur, THANE (TUNKEY)**
6. **3500 sqft Mansion (Old Fashioned Wada) for Mr. Belsare at Girivan near Mulsi, PUNE (TURNKEY)**
7. **Luxurious Villa 1800 sqft at Alibaug for Mr. Mandlik**
8. **2000 sqft Luxurious villa for Organo Antharam**



OUR EXISTANCE IN INDIA

SOME OF OUR CLIENTS



SUMMARY OF SEAS HOMES WORK

- **Total Project Executed in 2021/22 – 8**
- **Total Project Executed in 2022/23 – 16**
- **Ongoing Projects - 68500 sqft**
- **Completed Projects – 33784 sqft**
- Average time required for one project – 51 days
- **Total Employees in Team – 25**
- **Our Clients - TATA, Malpani Group, VKV, Teesta Urja, Modulous Housing, Yellow Slice, Organo Eco-Habitants, etc**



www.seashomes.com



seashomes@gmail.com



+91 9545488277, +91 9403943454



seashomes



seas_homes



SEAS Homes