



SEAS Homes

Sustainable Eco-friendly Aesthetic & Smart
Housing Solutions for a Better Future





DREAM



DESIGN



BUILD



ABOUT US

- We are the team of **STRUCTURAL ENGINEERS** thriving to deliver quality homes that you've always dreamt of!
- Not only homes, but we could assist you in **ROOFTOP EXTENSION** to upgrade your home.
- We do understand importance of a home as One invests the lifetime savings in it. But, leave all your worries now! Because, **YOUR HOME IS IN OUR HANDS!**
- Today, building a conventional house is not that easy because of shortage of bricks & sand, costly construction, heavy loads, messy construction methods, lack of accuracy and a time consuming erection. But we construct a house **WITHOUT SAND, BRICK, WATER, CEMENT & THAT TOO WITHIN THE SHORTEST TIME SPAN!**
- We are providing Japanese and Western technology of sustainable housing. **THE LIGHT GAUGE STEEL FRAMING HOME!**
- **AFFORDABLE** yet aesthetic, fast construction yet robust, energy efficient yet **ECO FRIENDLY!**
- We strongly believe Environment friendly smart home which has less carbon footprint, zero wastage, fully recyclable, **ENERGY EFFICIENT** yet attractive is the future and of course "A Feel Good" place to live!
- **YOU CAN JUST RELAX AND WE WILL DO EVERYTHING TO BUILD YOUR DREAM HOME RIGHT FROM THE SCRATCH!**



Sustainable

- Resourceful, Thermally insulated, leak proof, noise proof, air tight
- Better sustainability in any weather condition, durable and strong with the use of high quality materials for long lasting performance
- Early returns on investment
- Affordable maintenance

Eco-Friendly

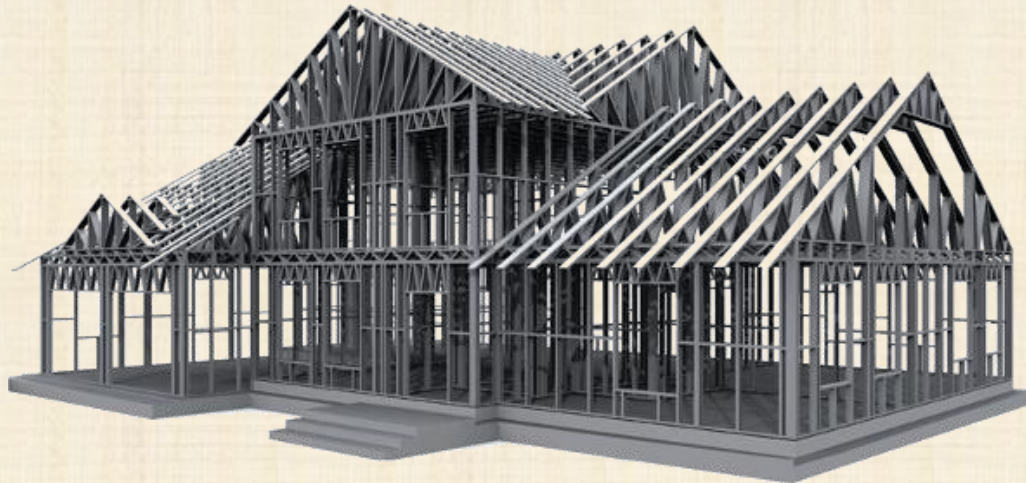
- No use of cement, water, any sand.
- Least carbon emission
- Lower energy needs whether its summer or winter
- Structured Ventilation
- Up to 60% recyclable

Aesthetic

- A beautiful and attractive house
- Efficient use of land
- Smooth finishing, customised cladding, wide windows and sloping roofs
- Eye-Catchy elevations and

Smart

- Smart Water System - to identify water leakage, consumption, water wastage etc.
- Local grey water recycling for domestic purposes
- Smart security systems
- 30 to 40 % saving on energy consumption, smart furniture, self sustained solar energy resource.



What is LGSF?

- Light Gauge Steel Framing is cold rolled load bearing system. **High quality galvanized steel frames are designed as per code requirements**
- Cold rolled sections are assembled on site or in factory to make panels like wall, floor, roof
- All panels arranged and fixed as per drawing to develop complete building.
- Complete building is covered by highly compressed fiber cement boards, gypsum boards, wraps and insulation to provide sustainable performance for long run



Your Home
Should be
the one which
is...

- Cost Effective: Value for Money
- Strong : to resist any natural calamity like a earthquake or a cyclone
- Durable: Easy maintenance and long lasting performance
- Early returns on investment : So you could live a dream before it just fades away.
- Protection : From termites, moistures, leakage, Noise and Fire too!
- Dry construction : To avoid messy sites
- Energy efficient: To cut down your electricity bill



So, Why NOT a RCC Building?

Very Heavy loads and extension of house is avoided

Regular moist and leakage issue in monsoon

Heating in summer and cold in winter

Not smooth surface of wall and ceiling

Shifting of walls after construction become difficult

Less carpet area because of thicker walls



Why LGSF?



Early return on investment



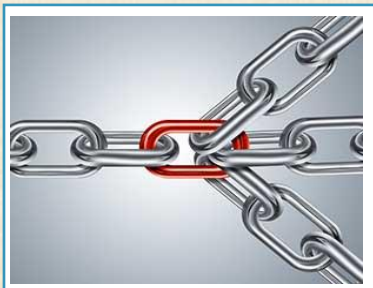
1/3rd time saving on construction



Fire Resistant



Energy Efficient



High Strength to weight ratio
Robust design



Customizable design



Sound Resistant



Water Proof



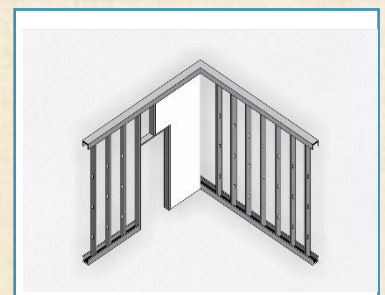
20 years warranty & min. age 50 years



Protection against moisture, termites, capillary actions



Seismic & wind resistant shear wall structure



Dry Construction

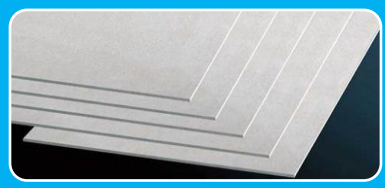


LGSF Home
will be of?



High Quality Galvanised Steel

- High grade non corrosive metals studs and channels with high strength to weight ratio
- Spaced very close to give high strength to wall and floors



Highly compressed high density fiber cement board and gypsum board

- Impact Resistance, fire resistance, sound proof, water resistant boards for dry construction
- Rigidly connected with studs and channels



Rockwool Insulations

- Keep home warm in winter and cool in summer
- Sound absorbent to act as sound barrier



Vapour Barrier & house wraps

- Control the moistures, leakage and reduces the dampness in home.
- UV protection, airtightness and highly durable polymer



External Cladding & finishes

- Enhance the aesthetic of home
- Keep house protected from external factors

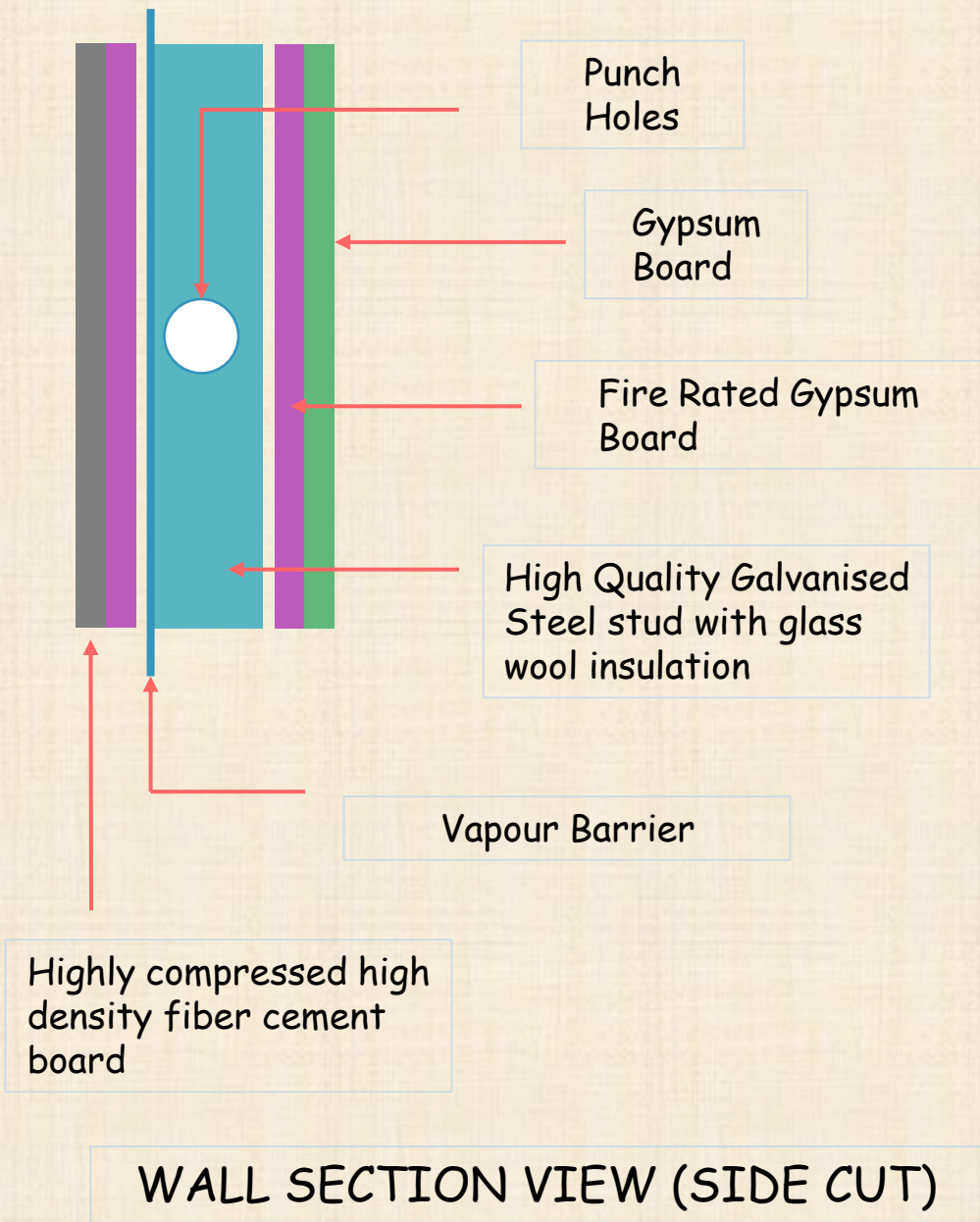
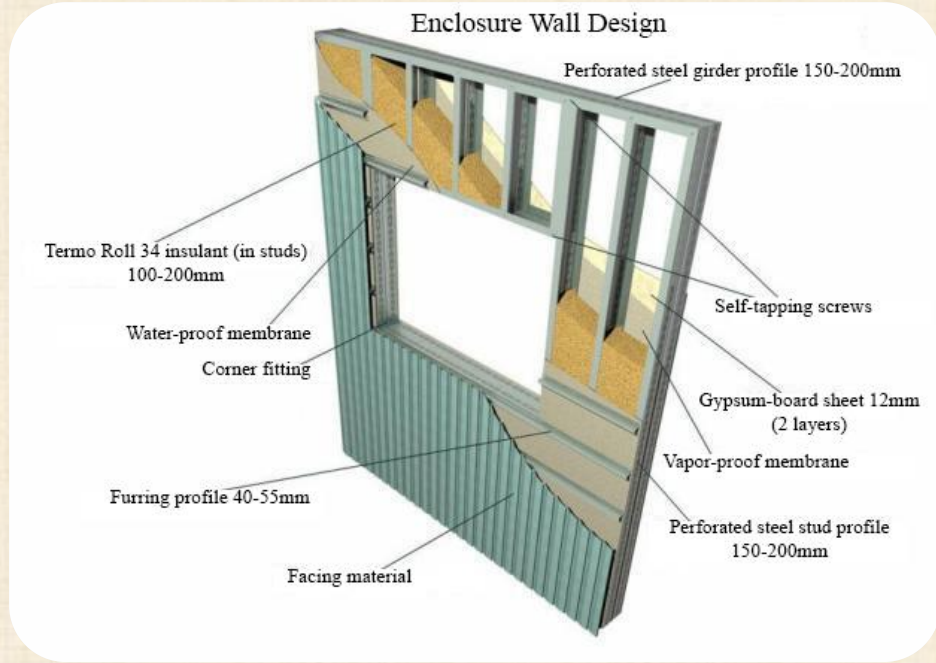


High Strength rigid Connections

- Rigid connection with foundations
- All members are connected with high strength hilti fasteners and anchors.



What is inside it?



WALL SECTION VIEW (SIDE CUT)



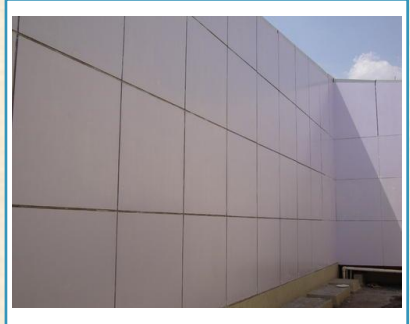
How Can We Help You ?



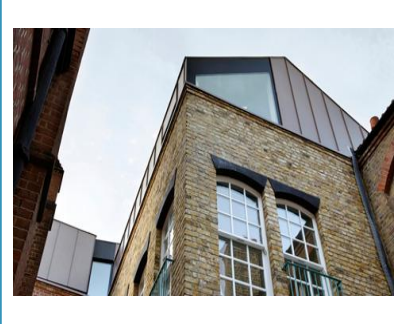
Aesthetic yet affordable Bungalow



Farm House



Light Weight External & Internal Partition



Rooftop Extension



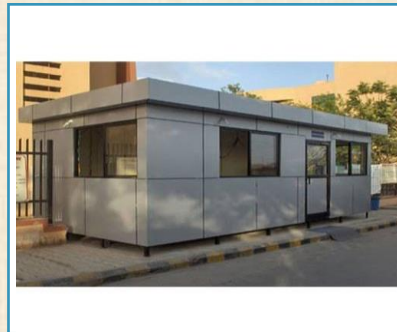
Temporary Accommodation



Container House



Beautiful Tiny House



Cabins & Offices

- Parking Shed
- Small shops and road side cafes
- Villas Resorts
- Portable House



"Elevate Your Living Standard with Our House Extension Solution"

Why LGSF for House Extensions?

Light Weight

- 60% lighter than conventional

Strong

- Safest Against Wind and Earthquake

Durable

- Fire resistant, noise proof, termite proof, moisture resistant

Fast & Easy Construction

- 30% to 40% faster construction. Extend your house within 3 months

Aesthetic

- Crack free, smooth & clean surface, easy to use any cladding make extension beautiful. European style extensions



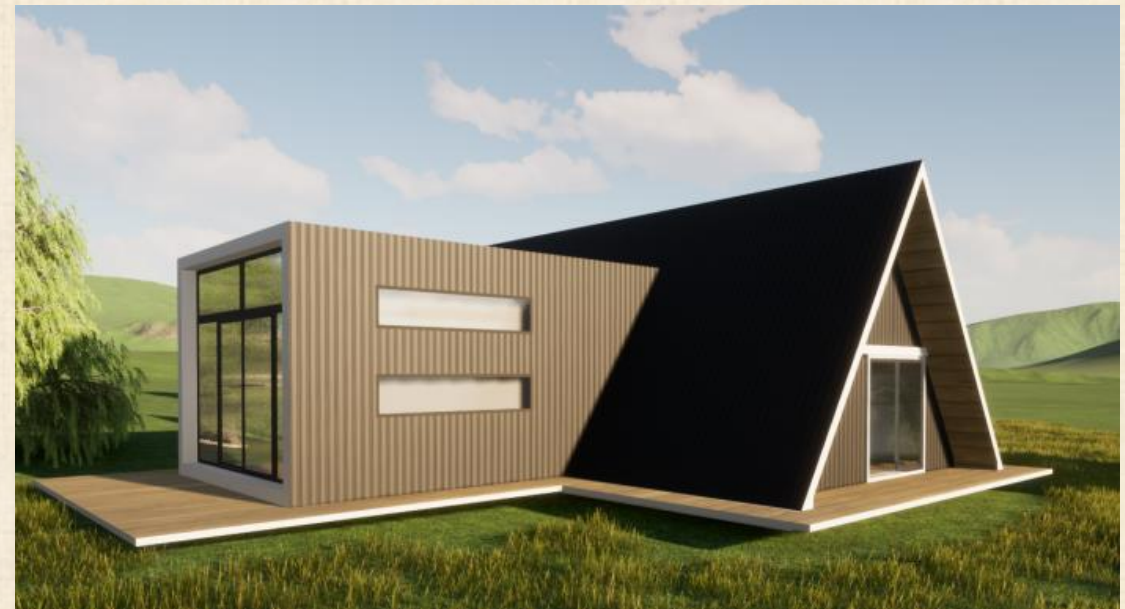


Oh, Aren't they the most beautiful Homes ?!





Any of these could be your next Home!!!





It could be a tiny house, a cabin or even Bungalow!





Let's Take a look, how it would look from inside?



A Tidy Construction unlike the conventional!



Dry wall
Construction
not only
adds the
Elegance but
also a
comfort!





One roof Solution

Plan

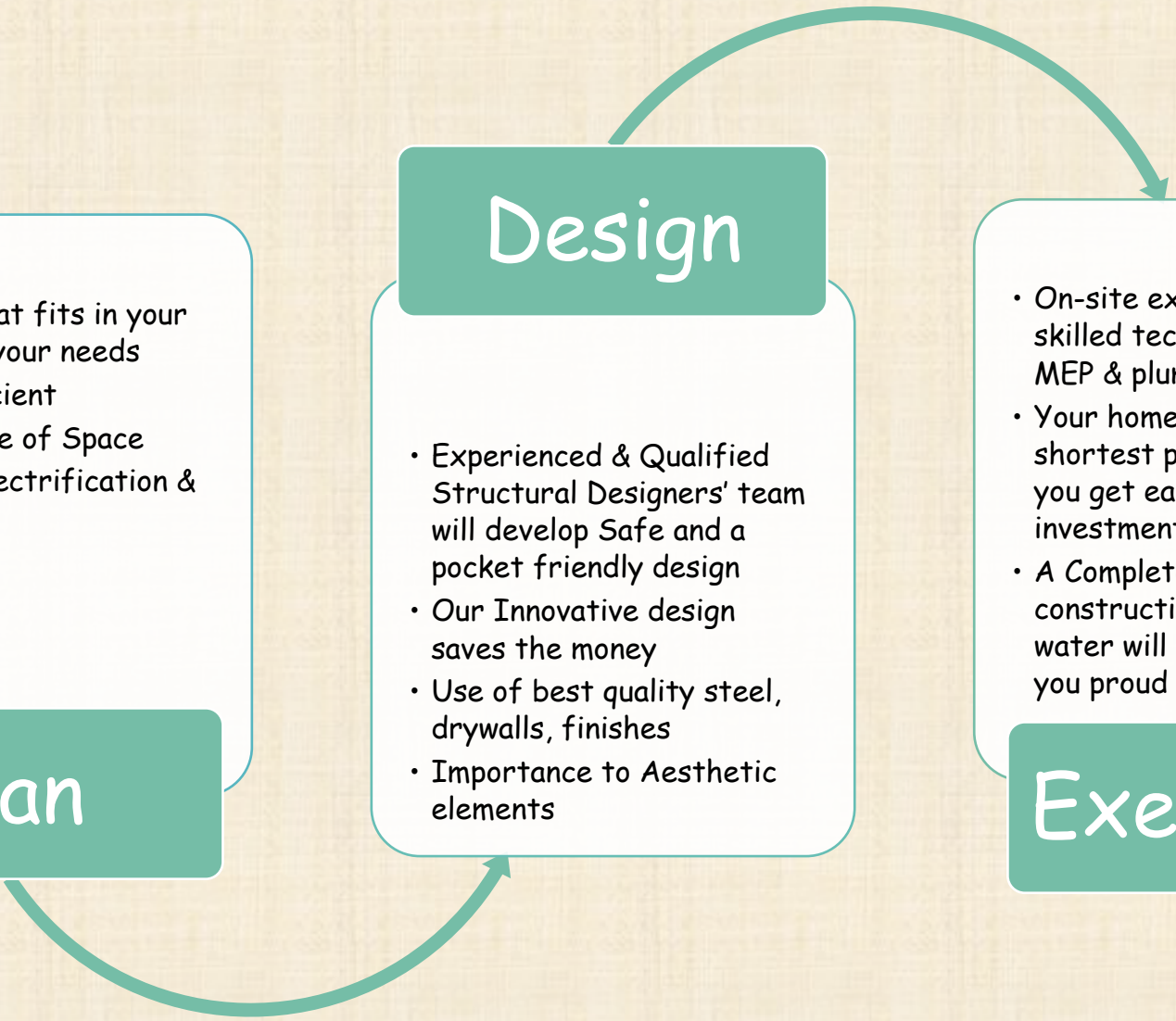
- Best plan that fits in your budget and your needs
- Energy efficient
- Optimum Use of Space
- Designing electrification & plumbing

Design

- Experienced & Qualified Structural Designers' team will develop Safe and a pocket friendly design
- Our Innovative design saves the money
- Use of best quality steel, drywalls, finishes
- Importance to Aesthetic elements

Execution

- On-site execution by skilled technicians including MEP & plumbing
- Your home will be ready in shortest possible time so you get early return on investment
- A Complete dry construction, without any water will definitely make you proud of yourselves





Pillars of Success



Your Dream HOME





Ton of
Benefits with
"NO EXTRA
COST!"

Features to elevate the living experience	SEAS Homes	RCC
Seismic & Wind resistant Design	✓	✗
10 Years Warranty on system & 100+ years of Steel Life (Age)	✓	✗
Anti-Corrosive Steel	✓	✗
Steel Sections Manufactured in the factory with highest possible precision	✓	✗
Certified, Tested & Approved Materials	✓	✗
Fast Construction	✓	✗
Acoustic Design	✓	✗
Thermal Insulation	✓	✗
Moisture Resistant	✓	✗
False Ceiling	✓	✗
Extra Carpet area	✓	✗
Elegant Finishing	✓	✗
Water Proofing	✓	✗
Eco-Friendly	✓	✗



FAQs

1. Where Can we Use LGSF technology?

Ans. - LGSF can be used almost in every sector: Residential, Hotels, Resorts, Farm Houses, Villas, Important Buildings such as hospitals and educational institutes, commercial projects, etc.. Also for portable houses, roadside cafes, shops and offices.

2. What is mean by dry construction?

Ans. - Zero water consumption during construction. Site is dust, mud and water free. We build in tidy atmosphere.

3. How fast can we build the house?

Ans. - 1000 Sq.ft building can be built in 1 month. It is 30 to 40% faster than RCC.

4. Why it is called as light construction?

Ans. - Total weight of LGSF house system can be 10 times lesser than RCC. So this construction is light.

5. What type of foundation is required for this?

Ans. - For LGSF house, shallow footing is sufficient as load is not heavy.



FAQs

6. Can we use this for rooftop extension?

Ans. - This technology is extensively used for rooftop extension. Because of light weight and high resistance to wind and earthquake. Moreover this can be used for overall house extensions.

7. Does this steel rust?

Ans. - The steel is galvanised and zinc coated. So it will never corrode like normal steel.

8. Is steel safe in summer and lightening?

Ans. - This steel provide direct passage to electricity to ground so it is safest of all. This house comes with insulation so even in summer it feels cool.

9. What type of materials are used for the wall and ceiling surfaces?

Ans. - Highly compressed, High Density Fiber Cement Board and Imported Gypsum Boards.

10. Do the walls carry any external Hanging Loads?

Ans. - Loads Up to 40 Kg. could be hanged directly on the wall



+91 9545488277, +91 9403943454



seashomes@gmail.com



www.seashomes.com

Let's make ourselves proud for adopting a green way of living!

Contact Us